

Save this manual for future reference.

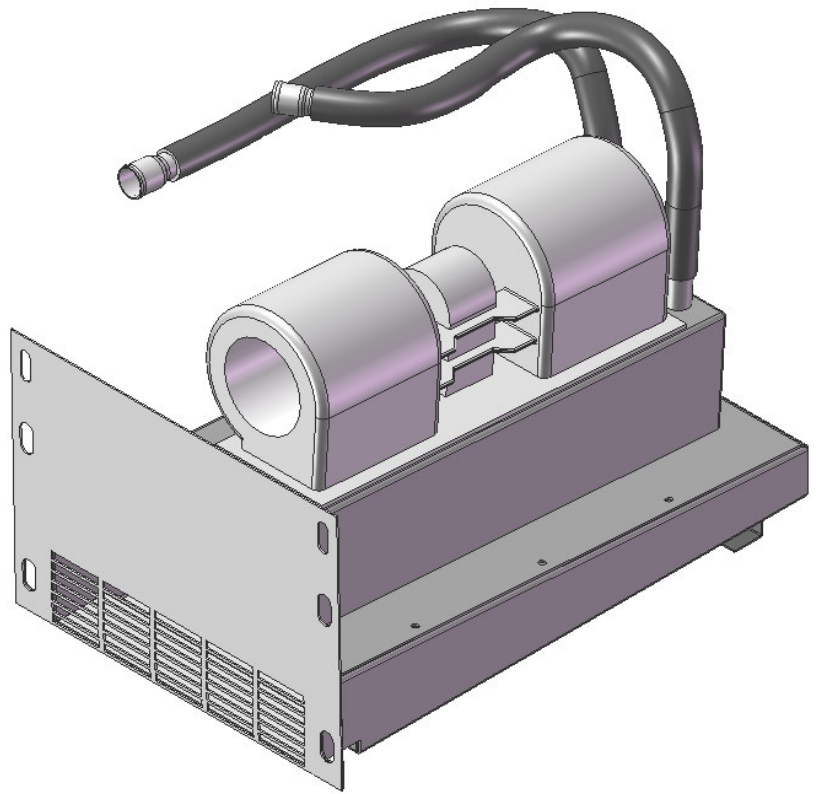
## Beaver Pro™

### Owner's Manual

Model:  
Yamaha Rhino  
Heater Kit \*

### Caution:

Before using this product, read this manual and follow all Safety Instructions.



## Yamaha Rhino Heater Kit\*

- Safety Instructions
- Heater Kit Contents
- Heater Assembly
- Operation
- Replacement Parts

\*The Beaver Pro™ cabs and accessories are in no way affiliated with the Yamaha Motor Corporation. Any use of the Yamaha name is only to identify their utility vehicle as it pertains to our accessories. Yamaha and Rhino are registered trademarks of the Yamaha Motor Corporation.

**Warning:** Failure to heed all safety and operating instructions and warnings regarding use of this product can result in serious bodily injury.

## SAFETY INSTRUCTIONS

Read entire assembly instructions before beginning work.

**Installing your BeaverPro™ Heater Kit could involve draining the engine coolant from your ATV and bleeding the cooling system. If you have no experience working on engines or cooling systems, please have your BeaverPro™ dealer install the heater kit.**

Working with hot coolant can result in serious injury. Always wear eye protection. Never cut or unplug coolant hoses or open radiator cap if coolant is hot.

Install all parts indicated in assembly instructions. Failure to fully assemble product before use could result in personal injury.

Some parts contain sharp edges as indicated in the manual. Wear protective gloves if necessary.

Dress for safety. DO NOT wear loose clothing, gloves, neckties or jewelry if using power tools to assemble this product.

Always keep your assembly area clean, uncluttered and well lit.

Keep visitors and children a safe distance away from the assembly area. Visitors should wear the same safety equipment described above.

# HEATER KIT CONTENTS

Your BeaverPro™ Yamaha Rhino heater kit should contain the parts listed below. Separate all parts from packing materials. Do not discard packing material until assembly is complete. Item quantities are listed in parenthesis below.

## Parts List

- Heater Assembly (x1)
- Electric Switch and Knob (x1)
- Hose Clamps (x2)
- Wiring Harness
- Four large OD, 1/4" ID Washers

## TOOLS REQUIRED FOR ASSEMBLY

Ensure that you have the following tools available before you begin the assembly of your BeaverPro™ Yamaha Rhino Heater Kit.

- Flat Screwdriver
- Utility Knife
- Wrench Set or Rhino Tool Kit
- 2 Pairs of Locking Pliers
- Pre-mixed Engine Coolant
- Small Funnel

# HEATER KIT ASSEMBLY

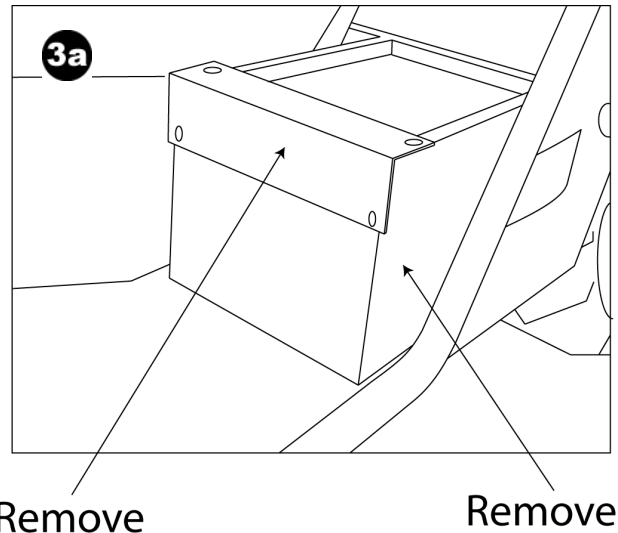
The following section contains information pertaining to the proper installation of your new BeaverPro™ Heater Kit. Total assembly time for the heater kit is about 2 hours.

## 1. Remove Seats

a) Remove both the driver and passenger seats. Refer to your Rhino owner's manual for details. (Step not shown)

## 2. Remove Plastic Engine Cover

a) Remove the plastic engine cover for access to the engine. Refer to your Rhino owner's manual for details. (Step not shown)



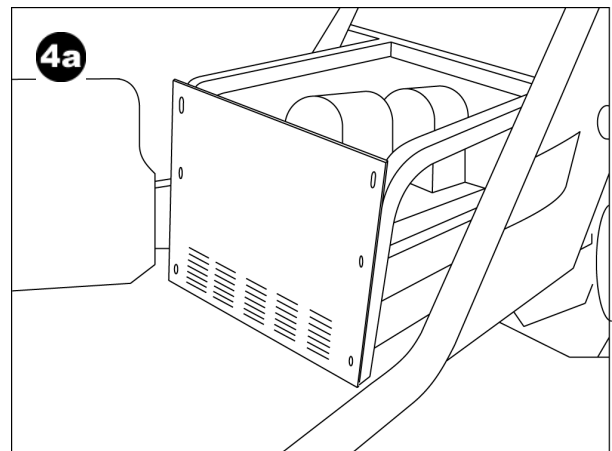
## 3. Remove Bracket and Shield

a) Remove the metal seat bracket and the plastic shield from the driver's seat mount as shown on right. Save hardware for subsequent assembly procedure.

## 4. Install Heater

a) Install the heater as shown on right.

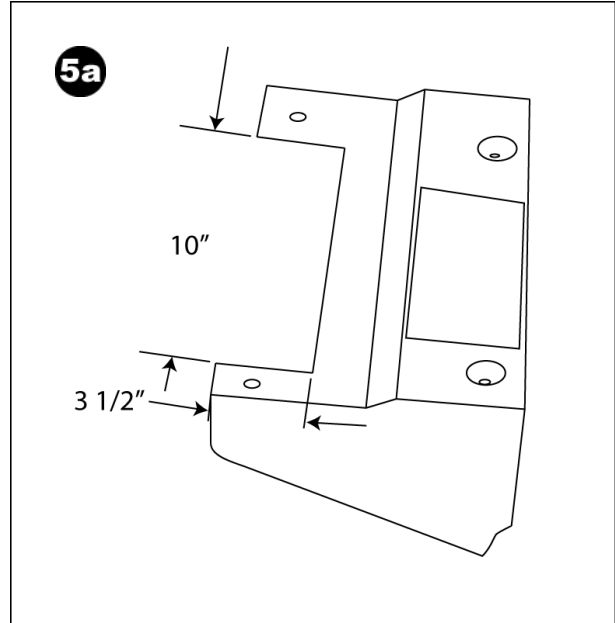
Note: When properly positioned, the base of the heater sits **on** the square metal tube at the back of the seat frame.



## 5. Re-install Shield.

**Note:** If installing the heater in a Rhino with the BeaverPro™ Rhino cab, you don't have to re-install plastic shield under the seat. Re-install the metal seat bracket using original hardware as explained in step 6. Install four(4) large OD 1/4" washer behind the two plastic retainers closest to floor

a) If installing the heater in a Rhino with the BeaverPro™ Rhino Roof kit or in a Rhino with no cab, cut a ventilation hole in the plastic shield as shown on right. Re-install the plastic shield using original hardware.



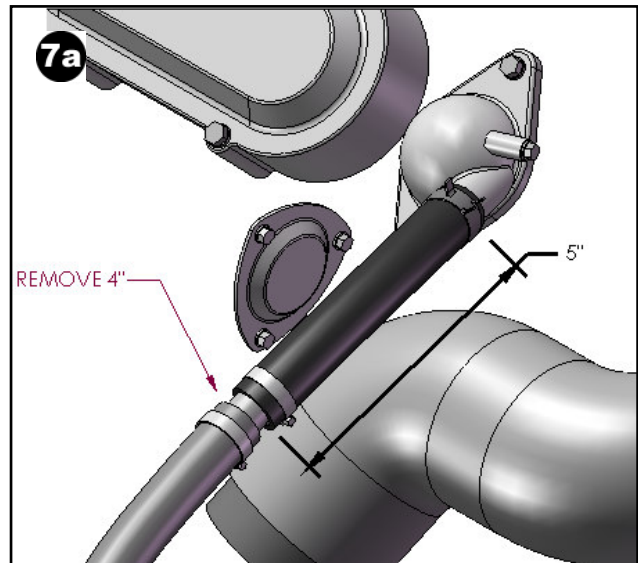
## 6. Re-install Seat Bracket.

a) Re-install the metal seat bracket using the original hardware. (Step not shown)

## 7. Cut Cooling Hose.

a) Locate the coolant hose coming from the thermostat housing at the top of the engine. **Remove 4" from the hose, 5" from first end** as shown on right.

**WARNING:** Using locking pliers, clamp the coolant hose **above and below** the cuts to minimize coolant loss. If too much coolant is lost in this operation, you may have to bleed the cooling system.



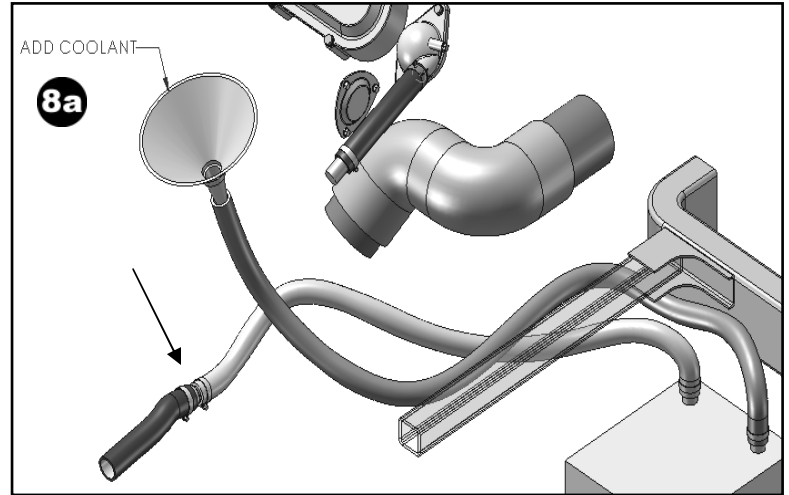
## 8a. Connect Lower Coolant Hose

a) Connect the hose indicated in image 8a to the cut end of the hose running along floor of cab. Tighten hose clamp. Remove locking pliers on this hose only.

**Note:** Hoses should be routed so that they do not interfere with the installation of the engine cover or the seat. (Refer to image)

## 8b. Fill Heater with Coolant

b) To prevent an air lock in your cooling system, fill the remaining loose coolant hose on the heater with pre-mixed engine coolant as shown in image 8a.



**Note:** Heater hoses may need to be shorter on particular model years. **Adjust as required to avoid kinking.**

## 9. Connect Top Hose

a) Connect the remaining hose from heater to the hose at the top of the engine. Tighten hose clamp. Remove locking pliers. (Step not shown)

**IMPORTANT:** Inspect hoses for kinks that would prevent coolant flow. If hose is kinked, loosen clamp and reposition hose to remove kink.

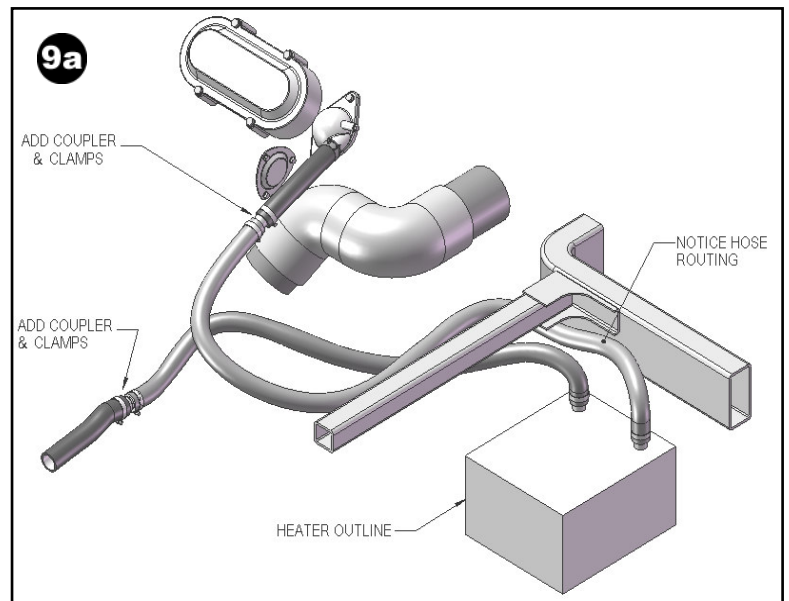
## 10. Engine Warm Up

Start engine and let warm up until the electric fan in front of the radiator comes on. (Step not shown)

## 11. Check Coolant Flow

Check that both hoses are warm to the touch. (Step not shown)

**Warning:** If hoses do not get warm, there is an air lock in the cooling system. The cooling system needs



to be bled. Consult service manual or dealer.

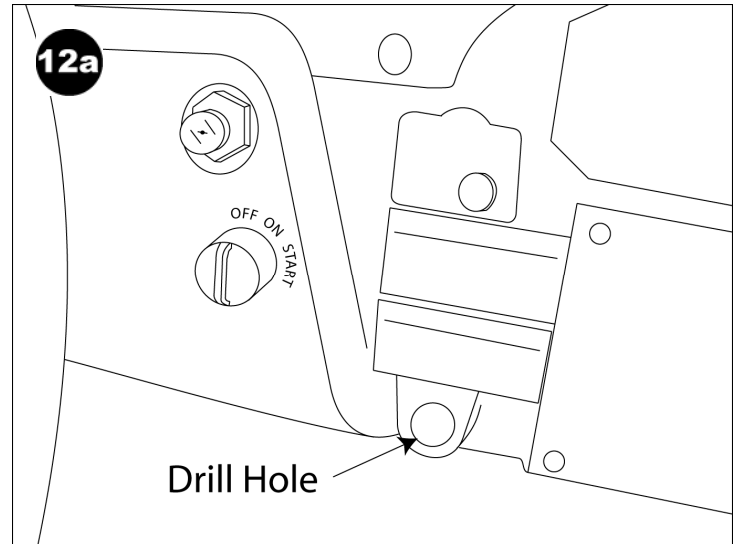
c) Inspect heater installation ensuring hoses are free of kinks and connection are dry.

d) Shut off engine and let engine cool down. Open radiator cover and fill with coolant to recommended level. (Step not shown)

### 12. Drill hole for heater switch and install switch.

a) Drill hole for switch as shown on right.

b) Remove knob from switch (Pull straight) and install heater switch in hole. Tighten lock nut. Re-install knob. (Not shown)



### 13. Connect Wires per attached diagram

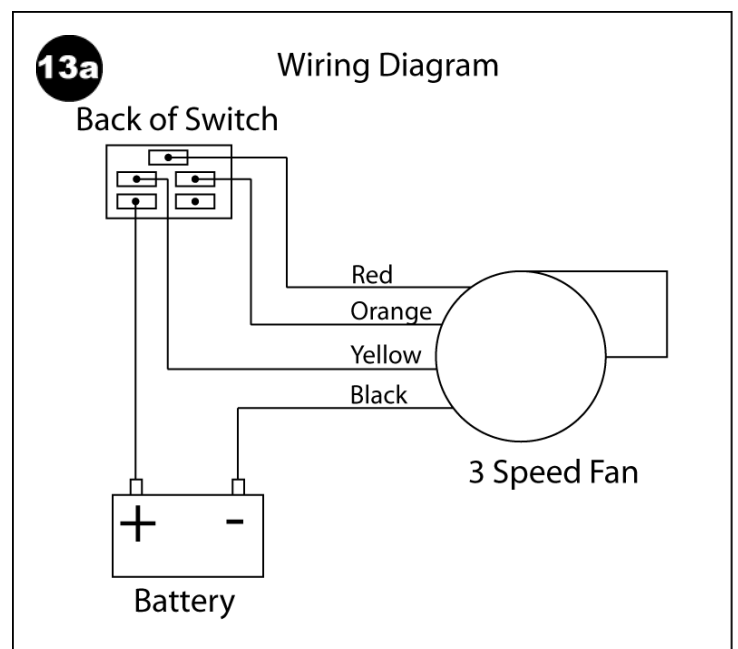
a) Route wiring harness from heater to switch. Connect both ends of the wiring harness as indicated on right.

b) Test heater operation.

### 14. Completing Assembly

a) Re-install engine cover using original hardware (Step not shown)

b) Re-install driver and passenger seats (Steps not shown).



# OPERATION

The BeaverPro™ Heater Kit when combined with the BeaverPro™ Rhino Hard Cab Kit allows the full enjoyment of the Rhino in all weather conditions. Please visit our website at [www.beaverpro.com](http://www.beaverpro.com) for more information.

## Maintenance

Periodically check the level of coolant in your ATV as part of normal preventive maintenance. Check the hoses going to your heater for leaks. Tighten clamps or replace hoses as required. Running your ATV engine without sufficient cooling will severely damage your engine.

# REPLACEMENT PARTS

Use this parts list to order replacement parts from BeaverPro.

10074	Heater
10075	Heater Switch
10076	Hose Clamp
10079	Coolant Hose
10080	Heater Kit Wiring Harness
10096	Heater Cover
10107	Heater Base/Front Assy
10117	Heater Knob
10118	Washers, 1/4"ID, Large OD
10124	3/4" to 5/8" Straight Reducer

To order replacement parts, contact the Parts Department at:

LB Manufacturing Inc.  
671 Babin Street, Dieppe Industrial Park,  
N.B. Canada E1A 5M7  
Ph: (506) 388-3335 Fax (506) 388-3325  
[www.beaverpro.com](http://www.beaverpro.com)  
[info@beaverpro.com](mailto:info@beaverpro.com)